

## National Technical Components

### The service functions of the GDI-DE:



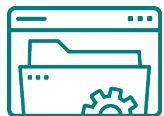
As a central access point, <https://Geoportal.de> offers simple ways to research, combine, display in maps and spatial data sets and services.



The **Geodatenkatalog.de** is a discovery service (based on metadata) for all available spatial data within the GDI-DE.



The **GDI-DE Testsuite** is an application for testing the quality of metadata, spatial data sets and services and is the central validation tool of the GDI-DE.



The **GDI-DE Registry** is an information system for the central administration and publication of geodata-related contents of the GDI-DE.



The **GDI-DE Monitor** is a quality assurance tool for checking compliance with GDI-DE and INSPIRE availability and compliance requirements.

Users can access the data in the GDI-DE directly via the Geodatenkatalog.de discovery service and the Geoportal.de web application.

## Contact and more information

### Coordination Office Spatial Data Infrastructure (SDI) Germany

Federal Agency for Cartography and Geodesy  
Richard-Strauss-Allee 11  
60598 Frankfurt am Main, Germany

Phone: + 49 (0) 69 6333-258

Telefax: + 49 (0) 69 6333-441

E-Mail: [mail@gdi-de.org](mailto:mail@gdi-de.org)

Internet: [www.gdi-de.org](http://www.gdi-de.org)

[www.geoportal.de](http://www.geoportal.de)

<https://wiki.gdi-de.org/>

Twitter: [www.twitter.com/gdi\\_de](https://www.twitter.com/gdi_de)

More information about GDI-DE Monitor is available at:

<https://wiki.gdi-de.org/display/GM/GDI-DE+Monitor>

GDI-DE Monitor web application:

<https://monitor.gdi-de.org/>

Further information about the GDI-DE network is available at: [www.gdi-de.org/en](http://www.gdi-de.org/en)

*Published by: Coordination Office SDI Germany | 2023*

*Pictures by: Fotolia.com (title), Coordination Office SDI Germany*



**GDI-DE**  
**Monitor –**  
**Ensure quality**



<https://monitor.gdi-de.org/>  
[www.gdi-de.org](http://www.gdi-de.org)  
<https://wiki.gdi-de.org/>

Moving things forward together

## GDI-DE Monitor

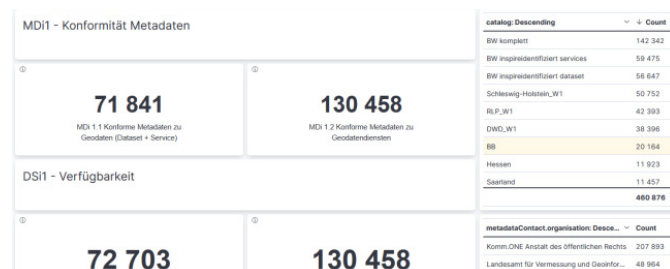
The GDI-DE Monitor is the latest National Technical Component (NTK) of the GDI-DE and offers extensive possibilities for quality monitoring of all metadata in the GDI-DE. The web application is primarily aimed at geodata providers.

The GDI-DE Monitor enables the verification of compliance with availability and conformance requirements of GDI-DE and INSPIRE. Thus, the GDI-DE Monitor supports the national geodata holding agencies in the provision of their geo-resources into the GDI-DE and in the implementation of the INSPIRE directive.

With the help of the GDI-DE Monitor, evaluations of the accessibility and usability of geo-resources can also be created.

The GDI-DE Monitor supports the GDI-DE contact points at the federal and state level in the preparation and evaluation of the annual INSPIRE monitoring, in which the monitoring indicators can be forecast at different points in time.

### Monitoring Forecast Dashboard



## Functionality

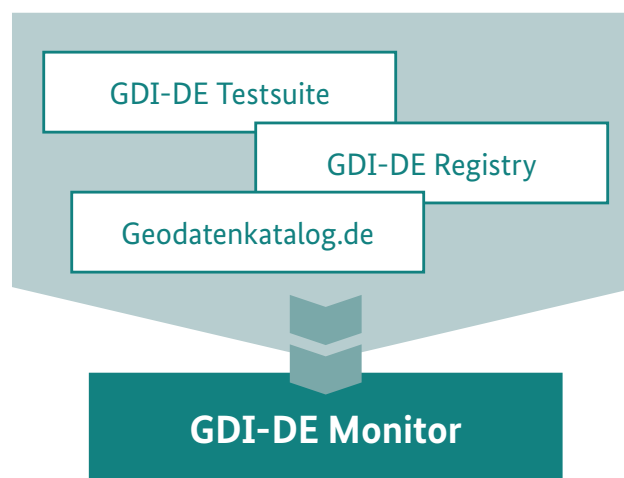
The GDI-DE Monitor uses the functions of the Geodatenkatalog.de, the GDI-DE Testsuite and the GDI-DE Registry for a comprehensive evaluation:

- Overview of available metadata
- Analysis of metadata quality
- Assignment of keywords to code lists

Technically, the following datasets are transferred to the monitor on specific key dates:

- Metadata from the geodata catalog
- Test definitions of the GDI-DE Testsuite
- Code lists of the INSPIRE Registry

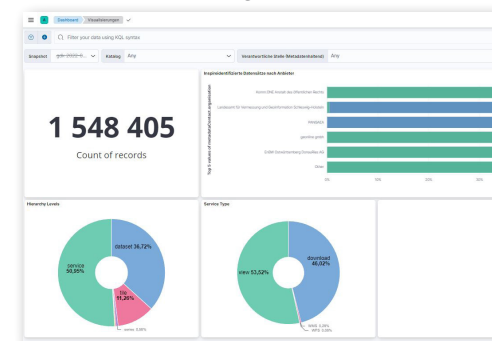
The update of the metadata is adapted to the harvesting cycle of the Geodatenkatalog.de.



## Technology

The concept of the GDI-DE Monitor is based on the GDI-BW metadata suite. The analysis is done with the database software BaseX.

Dashboard: Visualisierung



Results overview

